

CLEARLINE



These are the most popular Clearline gauges. They offer a choice of two measuring ranges and the option of metric only, or Inch/metric scales.

INCH/METRIC		
MODEL NO.	RANGE INCH/MM	SCALE MARKED
A100-62	±0.001 ±0.025	10-0-10 25-0-25
A100-63	±0.002 ±0.050	20-0-20 50-0-50

METRIC ONLY

MODEL NO.	RANGE MM	SCALE MARKED
A100-23	±0,025	25-0-25
A100-24	±0,050	50-0-50



Air plugs and air rings for use with Clearline units are marked with this symbol. It is important to check that the gauge is also marked with the correct Clearline range for the unit being used.

MULTI-WAY CLEARLINE

With this versatile space saving gauge, up to three measuring heads (plugs or rings) may be used in sequence. Based on the Clearline gauge, it offers all the scale options of this series.

The bayonet gauge connectors are located at the rear of the unit and each gauge channel consists of a completely independent circuit with its own magnification and zero control.

Channels are brought into operation by the simple rotation of a numbered lever switch at the side of the unit. There is no interaction between channels and switching may take place in any sequence.

The Multi-way, Clearline provides a rapid means of gauging a number of dimensions without the need to change and re-set the gauging heads.

To specify the dial required, prefix Model No. quoted in above Clearline table with 3, e.g 3/A100-23 for Multi-way Clearline with ±0.025mm dial.



SERVICE & REPAIR

A&E Gauges Ltd can supply re-conditioned Clearline Gauges in the UK to "as new" standard both for appearance and performance with a one year warranty period at very attractive prices.

For further information on Re-conditioned Units please telephone:
+44 (0) 1582 794136.

A&E Gauges Ltd has a comprehensive Service & Repair facility for Clearline Units and for Air/Electronic Converters. Work can either be carried out in the UK at the customer's works or units can be sent back to Redbourn for repair. Service Contracts can be designed to suit customer's requirements.

For further information about Service and Repair please telephone:
+44 (0) 1582 793528.

MINIATURE AIR PLUG GAUGES



'S' TYPE AIR PLUG GAUGES



'M' TYPE AIR PLUG GAUGES



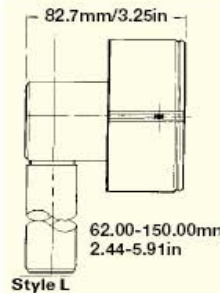
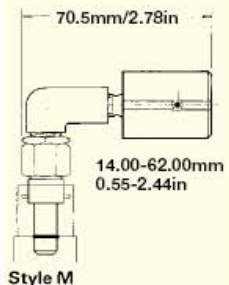
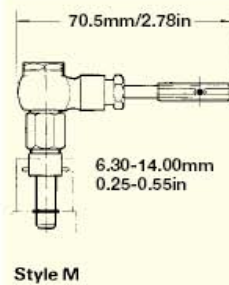
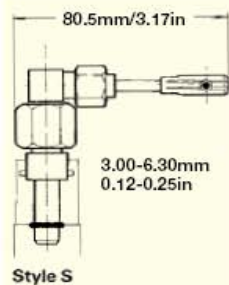
'L' TYPE AIR PLUG GAUGES



90° ADAPTORS

These are designed to assist with the gauging of bores during machining operations. 'S' and 'M' type plugs and adaptors are used in conjunction with the Universal Adaptor Handle, while on 'L' type adaptors the 200mm/8in long hand grip is screw connected.

90° adaptors may also be used in conjunction with air rings.



UNIVERSAL ADAPTOR HANDLE

The handle is supplied with 1,3m/4ft of flexible hose. Bayonet fittings on the handle and hose end provide a rapid and convenient means of applying gauges direct to the work.

NOTE: Flexible Hose upto 2m/6ft can be supplied to order.

