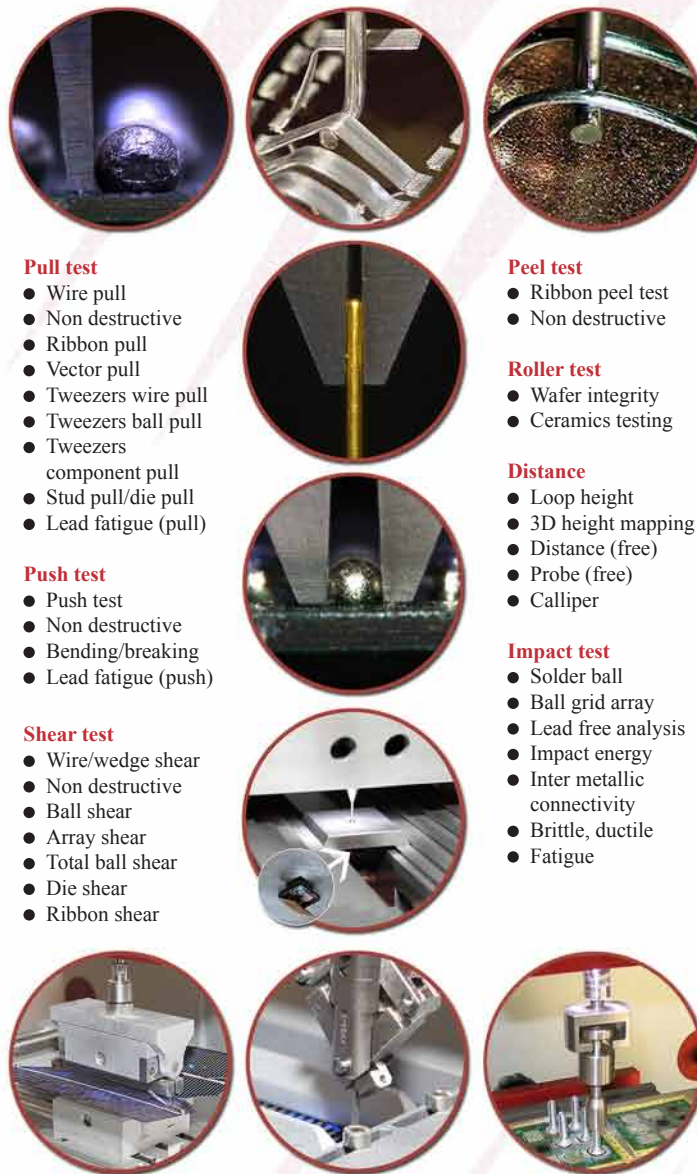


- A great strength of the established Condor software is that it is **completely open**, allowing you to easily customize it for the widest range of tests. For more standard applications the new EZ software provides preset configurations and simple, **intuitive operator screens**, making it ideal for the production environment. The more capable and flexible options are still there should you need them, but they can be hidden for day to day use.



**EZ** Joysticks

- The controls for XYZ manipulation and all the frequently used function buttons should be ergonomically at hand without the need for the operator to look away from the microscope. The EZ joystick and keypad controls do just that making testing a **stress free operation**.



**Pull test**

- Wire pull
- Non destructive
- Ribbon pull
- Vector pull
- Tweezers wire pull
- Tweezers ball pull
- Tweezers component pull
- Stud pull/die pull
- Lead fatigue (pull)

**Push test**

- Push test
- Non destructive
- Bending/breaking
- Lead fatigue (push)

**Shear test**

- Wire/wedge shear
- Non destructive
- Ball shear
- Array shear
- Total ball shear
- Die shear
- Ribbon shear

**Peel test**

- Ribbon peel test
- Non destructive

**Roller test**

- Wafer integrity
- Ceramics testing

**Distance**

- Loop height
- 3D height mapping
- Distance (free)
- Probe (free)
- Calliper

**Impact test**

- Solder ball
- Ball grid array
- Lead free analysis
- Impact energy
- Inter metallic connectivity
- Brittle, ductile
- Fatigue

For further information: [www.xyztec.com](http://www.xyztec.com)



**XYZTEC bv**  
 J.F. Kennedylaan 14-B  
 5981 XC Panningen  
 The Netherlands  
 Tel.: +31-77-3060920  
 Fax: +31-77-3060919  
 E-mail: [sales@xyztec.com](mailto:sales@xyztec.com)  
 Website: [www.xyztec.com](http://www.xyztec.com)

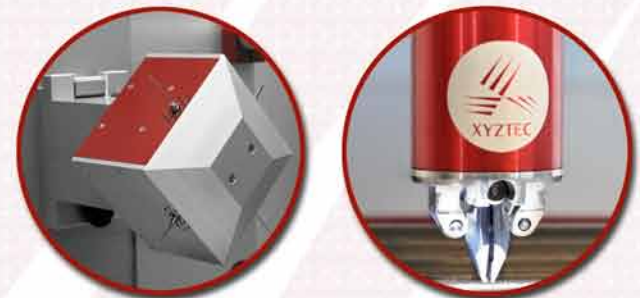
Other offices in:  
 Germany  
 Taiwan  
 United Kingdom  
 United States  
 Other sales channels:  
 please visit our website



*Bond testing made easy*



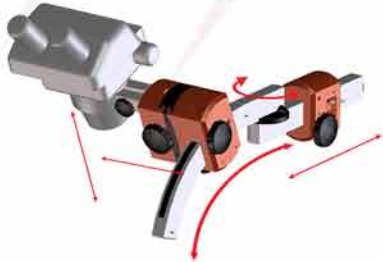
Meet the XYZTEC  
 Condor **EZ** Bond Tester



## The XYZTEC Condor **EZ** makes Bond Testing **EASY!**

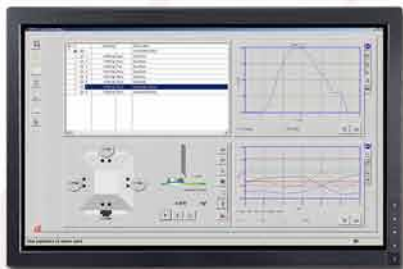
Including all of the benefits of our proven Condor range but further optimised to make its setup and operation even faster and its use more ergonomic.

Particular attention has been given to the operator controls and software.

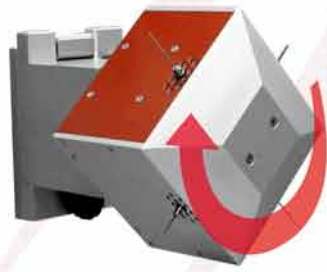


**EZ** Microscope support

- Microscopes can be difficult to setup so that they are both **comfortable to use** and provide a high quality image. The EZ system separates the principle adjustments of eye height, X-Y alignment, magnification and focus so that each can be precisely made without losing the other. The EZ system retains our extremely useful feature of allowing the microscope to be moved out of its operating position for **easy access when loading samples**.



**EZ** Software



RMU

### **Other innovative features include:**

- The Revolving Measurement Unit (RMU) enabling continuous operation with up to 4 different test types on the one machine.
- Next generation tweezer and CBP system with exchangeable tweezer tips and fully programmable:

- Closing force
- Closing speed
- Closing distance
- Landing force
- Step back height



- USB Condor connection to the computer system for optimal performance.
- Interchangeable Impact Measurement Unit (IMU) that can handle very large samples and can perform different test methods like: single overstress, high speed impact and automatic repeated solder joint testing .



IMU



Condor 150-3 HF with safety interlocked guards

- Flexible machine design for special applications and materials testing. For example: solar cell peel testing and high current copper bonds (Condor 150-3 HF).



Condor EZ with work holder for large solar cells



Digital PID controlled heater work holder